

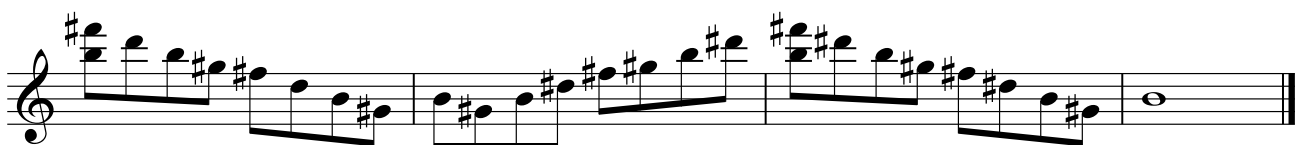
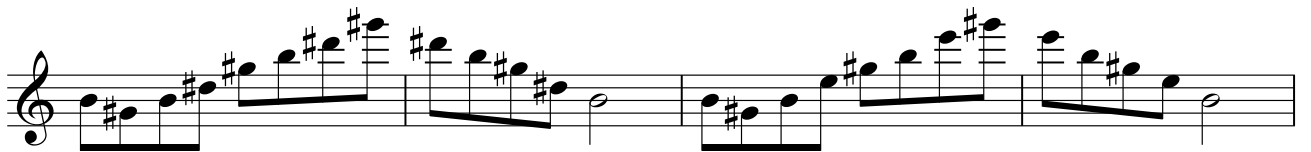
Treble Spiders



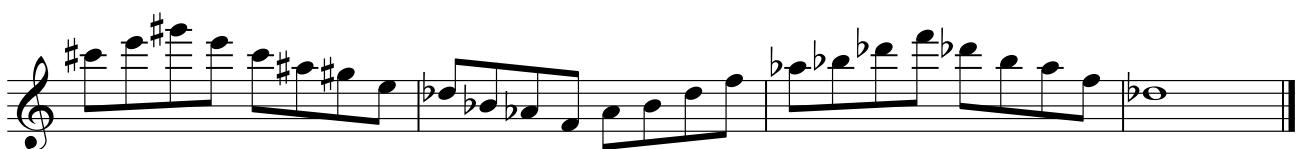
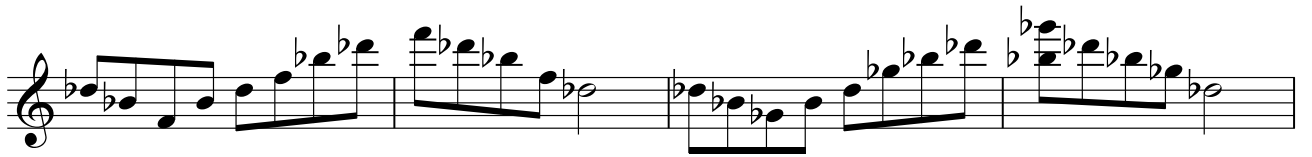












This page contains eight staves of musical notation, likely for a single melodic line. The notation is written on a five-line staff with a treble clef. The music consists of a sequence of notes and rests, with various accidentals (sharps, flats, and naturals) indicating pitch changes. The notes are primarily eighth and sixteenth notes, often beamed together. The overall structure appears to be a single melodic phrase or a short section of a piece. The notation is clean and professional, with clear note heads and stems.



This page contains eight staves of musical notation, all in treble clef. The music is written in a single system and consists of eighth and sixteenth notes, often beamed together in groups. The key signature is G major (one sharp, F#). The notation includes various accidentals such as sharps (#) and flats (b) placed above or below notes. The piece concludes with a double bar line at the end of the eighth staff.